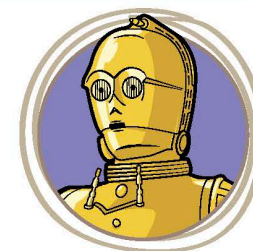
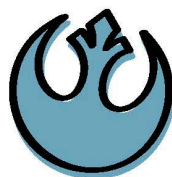


UPPERCASE and lowercase Lettering

Practice each letter by tracing the dotted line letters. Then, draw the letters on your own. These chunky block-style letters are a starting point for your dimensional hand lettering. If you like, you can use a pencil instead of a marker in case you need to erase or start over.



Your letters will look more polished and professional if you practice the skill of lifting your marker after straight strokes before creating the next stroke of the letter. Take your time and focus on creating clean individual lines.

Aa Bb Cc
Dd Ee Ff
Gg Hh Ii
Jj Kk

Ll Mm Nn
Oo Pp Qq
Rr Ss Tt
Uu Vv Ww
Xx Yy Zz



Liked this activity?
Find more in *Star Wars Hand Lettering*
from Dreamtivity
AVAILABLE NOW

ABCDEFGHIJKLMNOPQRSTUVWXYZ
abcdefghijklmnopqrstuvwxyz

© LFL

STAR WARS DAY
MAY THE 4TH
BE WITH YOU